

Installation Manual

EEEEC

Segment Design Tool Component Library 6.0.1

End Customer:
End Customer Reference Number:

Document File Name: SDT_Library_6.0.1_Installation_Manual.docx
Document Status: Approved

Authorizations

	Name	Function	Signature
Developed By:	Chetan Shaha	Sr. System Engineer	CS
Reviewed By:	Bibek Mohanty	Asst. Project Manager	BM
Released By:	Nitin Patankar	Project Manager	NP

Distribution

Name	Company	Name	Company

Revision History

Rev	Status	Description	Date	Developed By	Reviewed By
1	P1	16 new devices added to SDT Component Library	23-Sep-2015	Bibek Mohanty	
2	P2	63 new devices added to SDT Component Libraray	13-Apr-2018	Megha Shiral	
3	P3	10 new devices added to SDT Component Library	31-May-2019	Megha Shiral	
4	P4	11 new devices added/modified to SDT Component Library	11-Apr-2020	Megha Shiral	
5	P5	2 missing devices added/modified to SDT Component Library	05-Aug-2022	Chetan Shaha	Bibek Mohanty

Emerson Classification: **Internal**

© Emerson Automation Solutions 2022. All rights reserved. Unauthorized duplication, in whole or in part, is prohibited. Trademarks identified in this document are owned by one of the Emerson Process Management group of companies. Unless otherwise agreed to in writing by the parties, any information provided in this document is confidential or proprietary and may not be used or disclosed without the expressed written permission of Emerson Process Management.

Emerson Export Engineering Centre
Emerson Automation Solutions

Emerson Tower, Matrix Complex,
Near College of Engineering Pune,
Shivajinagar, Pune, India - 411 005

Emerson Automation Solutions 2022 - Internal and Proprietary



Contents

1	Introduction	4
1.1	Purpose	4
1.2	Scope	4
1.3	Terminology	4
2	Prerequisites	5
2.1	Hardware prerequisites	5
2.2	Software Prerequisites	5
1.1	Installation / Configuration steps for prerequisites	5
2	INSTALLATION PROCEDURE	7
2.1	Contents of installation package	7
2.2	Installation package execution steps	7
3	UNINSTALL PROCEDURE	8
3.1	Instructions / steps	8

1 INTRODUCTION

1.1 Purpose

The main objective of this release SDT Component Library 6.0.1 is that there is an addition of 2 missing devices to the SDT Component Library. There is a resolution for an existing issue in the SDT main application (version 6.0.5). Hence there are two different setup files available for the complete SDT installation.

This document will guide through the installation process of the SDT Component Library.

1.2 Scope

This manual contains information concerning the installation, un-installation of the SDT Component Library. To ensure proper installation or un-installation of the tool, the instructions given in this manual should be thoroughly understood and followed.

1.3 Terminology

SDT – Segment Design Tool

SDT Library or SDT Component Library - Segment Design Tool Component Library

2 PREREQUISITES

2.1 Hardware prerequisites

Component	Requirement
Computer / processor	1 gigahertz (GHz) or faster processor
Memory (RAM)	16 GB RAM and above
Operating System	Windows 10
System Type	(32-bit & 64-bit Machine)

Table 1 Hardware Pre-requisites

2.2 Software Prerequisites

It is mandatory to install the Main Segment Design Tool setup version 6.0.5 before the segment design tool component library setup.

1.1 Installation / Configuration steps for prerequisites

Important: SDT Component Library 6.0.1 will not work with releases for Main SDT application older than SDT version 6.0.5.

Below warning message will be pop-up in case if the Segment Design Tool Component Library is getting installed prior to the SDT main setup installation.

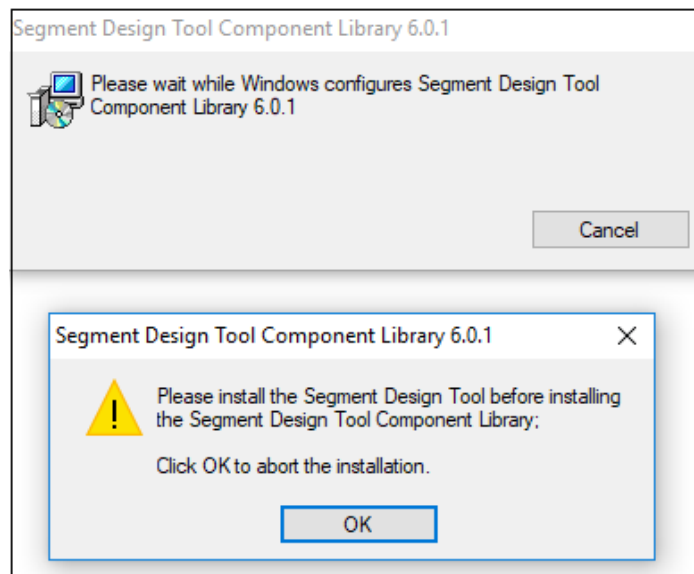


Figure 1 SDT Component Library installation warning

If there is any older version of the SDT Component Library present on the computer then before installing the new version of the tool first uninstall the older version of the application. To do this, follow the instructions mentioned in the "Uninstalling Procedure" section below in this document.

Important: It is very important to un-install the older version of the SDT Component Library (if present) before installing the new version of the SDT Component Library.

How to check that the earlier version of SDT Component Library is installed on computer(For eg. To check on Windows 10)??

Please refer process below:

- 1) Press keys Windows+R and type "Control Panel"
- 2) Click on Ok
- 3) Click on Programs-Uninstall a program
- 4) Check for the version of SDT Component Library as highlighted in the below screenshot.

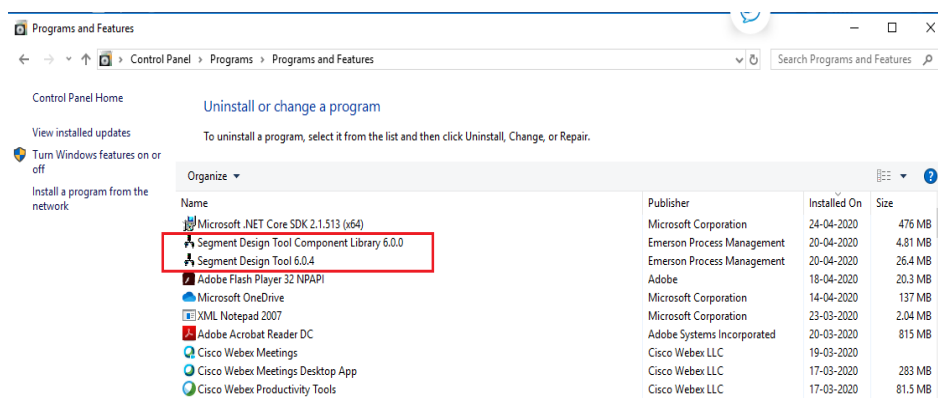


Figure 2 Installed Segment Design Tool on machine

In case if the user proceeds with the new version installation of the tool without un- installing the older version of the SDT Component Library then the installation process will prompt the below warning message and will stop the installation process.

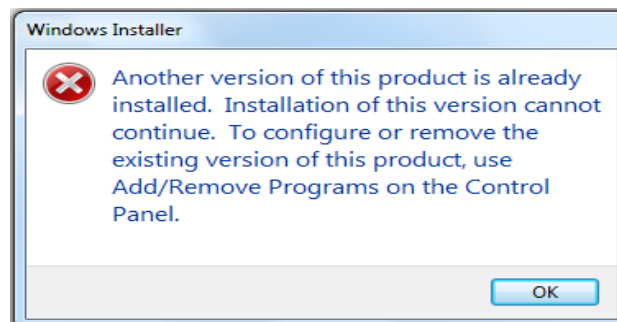


Figure 3 SDT Library prior version warning


2 INSTALLATION PROCEDURE

2.1 Contents of installation package

To download the installation package, visit the below web site. <https://gsuds.emerson.com/segment>

Separate installation package link is provided for SDT Main application and SDT Component Library on the right top corner of the web page.

The installation package for SDT Component Library consists the below mentioned setup file. Download the setup (msi) file.


- Segment Design Tool Component Library 6.0.1 setup file
 SDTComponentLibrary6.0.1

2.2 Installation package execution steps

Installation steps for Segment Design Tool Component Library setup

- Step 1 – Assuming Segment Design Tool main setup is installed, it is mandatory to install Segment Design Tool Component Library as well.

To install the same, double click on the SDTComponentLibrary6.0.1.msi file and wait till the installation process of Segment Design Tool Component Library completes.

 SDTComponentLibrary6.0.1

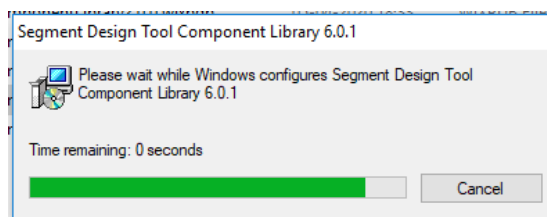


Figure 4 SDT Component Library Installation progress

- Step 2 – On successful installation of library component, below message prompt will appear. Click OK to close the window.

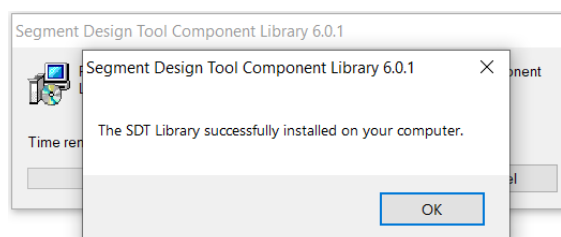


Figure 5 SDT Component Library Installation confirmation

3 UNINSTALL PROCEDURE

3.1 Instructions / steps

4.1.1.1 The easiest way to uninstall SDT library is using “Programs and Features” option from the windows control panel.

1. Select Control Panel -> Programs -> Programs and Features option.
2. Select Segment Design Tool Component Library 6.0.1 from the programs list, right click and select Uninstall option.

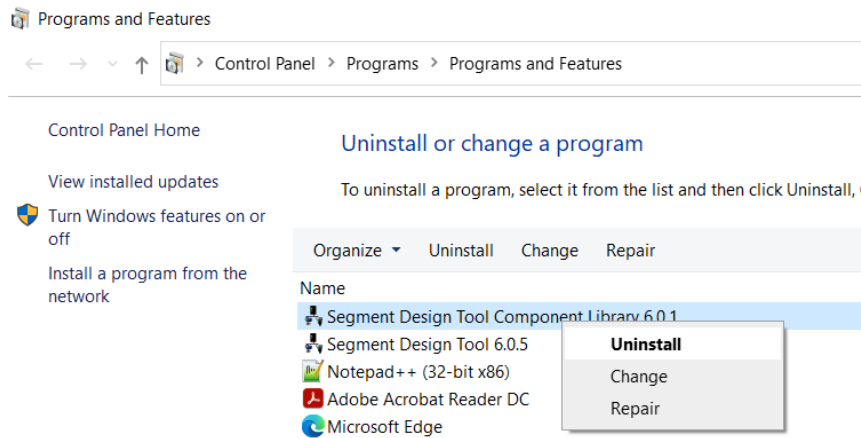


Figure 6 SDT Library uninstallation

3. Uninstallation of Segment Design Tool will also remove Segment Design Tool Component Library from the computer (if exist).

