

Installation Manual

EEEC

Segment Design Tool Component Library 6.0.0

End Customer:
End Customer Reference Number:

Document File Name: SDT_Library_6.0.0_Installation_Manual.docx
Document Status: Approved

Authorizations

	Name	Function	Signature
Developed By:	Megha Shiral	MS	
Reviewed By:	Nitin Patankar	NP	
Released By:			

Distribution

Name	Company	Name	Company

Revision History

Rev	Status	Description	Date	Developed By	Reviewed By
1	P1	16 new devices added to SDT Component Library	23-Sep-2015	Bibek Mohanty	
2	P2	63 new devices added to SDT Component Library	13-Apr-2018	Megha Shiral	
3	P3	10 new devices added to SDT Component Library	31-May-2019	Megha Shiral	

© Emerson Process Management 2019. All rights reserved. Unauthorized duplication, in whole or in part, is prohibited. Trademarks identified in this document are owned by one of the Emerson Process Management group of companies. Unless otherwise agreed to in writing by the parties, any information provided in this document is confidential or proprietary and may not be used or disclosed without the expressed written permission of Emerson Process Management.

**Emerson Export Engineering
Centre Emerson Process
Management
Process Systems and Solutions**
Emerson Tower, Matrix Complex,
Near College of Engineering Pune,
Shivajinagar, Pune, India - 411 005
T +91 (20) 3026 7000
F +91 (20) 3026 7998
www.EmersonProcess.com



Contents

1	Introduction	4
1.1	Purpose	4
1.2	Scope	4
1.3	Terminology	4
2	Prerequisites	5
2.1	Hardware prerequisites	5
2.2	Software prerequisites	5
2.3	Installation / Configuration steps for prerequisites	6
3	Installation Procedure	10
3.1	Contents of installation package	10
3.2	Installation package execution steps	11
4	Uninstall procedure	12
4.1	Instructions / steps	12

1 INTRODUCTION

1.1 Purpose

The main objective of this release SDT Component Library 6.0.0 is that there is an addition of 10 devices to the SDT Component Library. Hence there is only one setup file available for the complete SDT installation.

This document will guide through the installation process of the SDT Component Library.

1.2 Scope

This manual contains information concerning the installation, un-installation of the SDT Component Library. To ensure proper installation or un-installation of the tool, the instructions given in this manual should be thoroughly understood and followed.

1.3 Terminology

SDT – Segment Design Tool

SDT Library or SDT Component Library - Segment Design Tool Component Library

2 PREREQUISITES

2.1 Hardware prerequisites

Component	Requirement
Computer / processor	Intel Pentium 4 (or equivalent) and above
Memory (RAM)	2 GB RAM and above
Operating System	Windows7 or Windows 2008 server and Windows 10
System Type	(32-bit & 64-bit Machine)

2.2 Software Prerequisites

Note :- Application requires **administrative privileges** to install SDT Application & SDT Library.

Important: In case of Windows 7 or Windows 2008 server (32-bit & 64-bit Machine) operating system it is mandatory to have “.Net Framework version 2.0 or above version” installed on the computer.

How to check that the “.Net Framework version 2.0” is installed on the Windows 2008 server operating system computer?

Please refer process below:

- 1) Click on Start
- 2) Click on Control Panel
- 3) Click Programs and Features

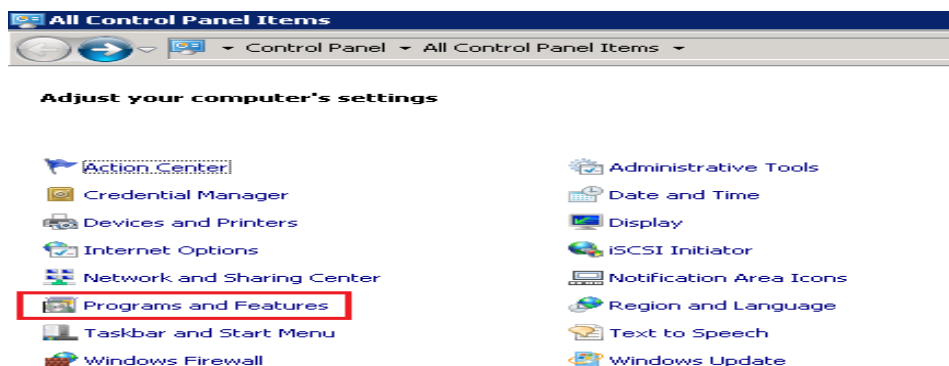


Figure 1 - .Programs and Features.

4) Check for the entry highlighted in the below bitmap.

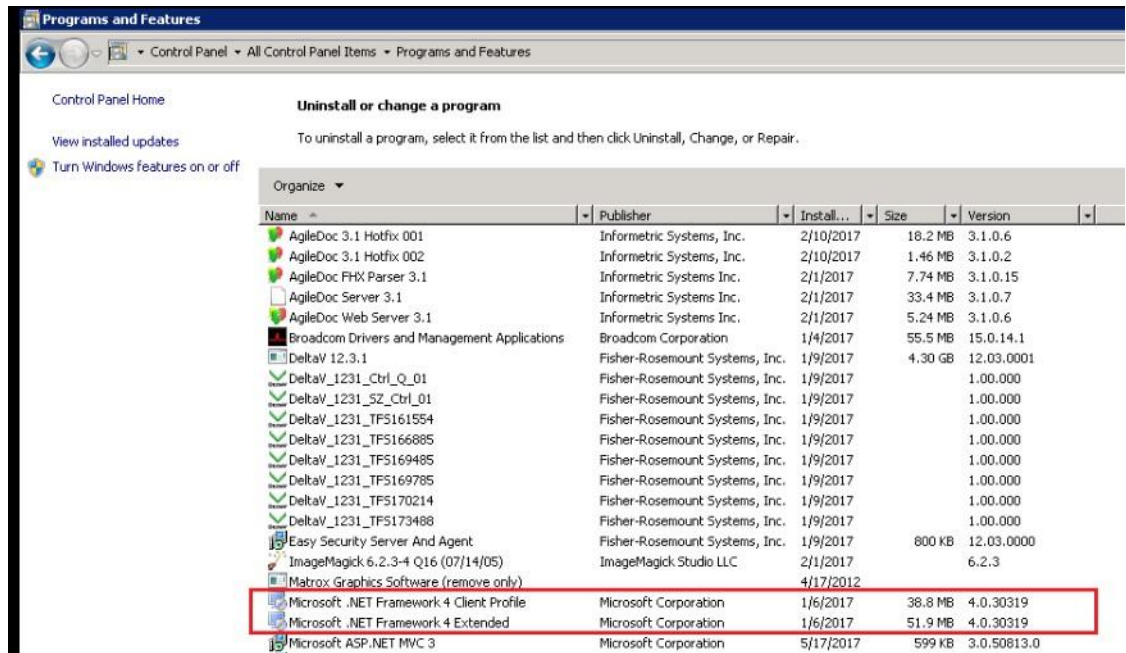


Figure 2 - .NET Framework version 2 or above.

In case if the user proceeds with the SDT Component Library 6.0.0 setup installation without “.NET Framework version 2.0” installed on the computer then the installation process will prompt the below message and will stop the installation.

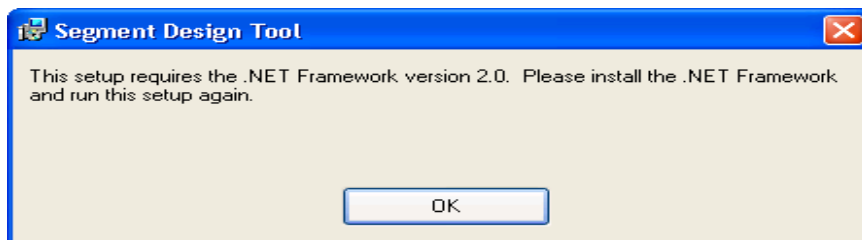


Figure 3 - .NET Framework version 2.0

2.3 Installation / Configuration steps for prerequisites

It is mandatory to install the Main Segment Design Tool setup version 6.0.3 before the segment design tool component library setup.

Important: SDT Component Library 6.0.0 will not work with releases for Main SDT application older than SDT version 6.0.3.

Below warning message will be pop-up in case if the Segment Design Tool Component Library is getting installed prior to the SDT main setup installation.

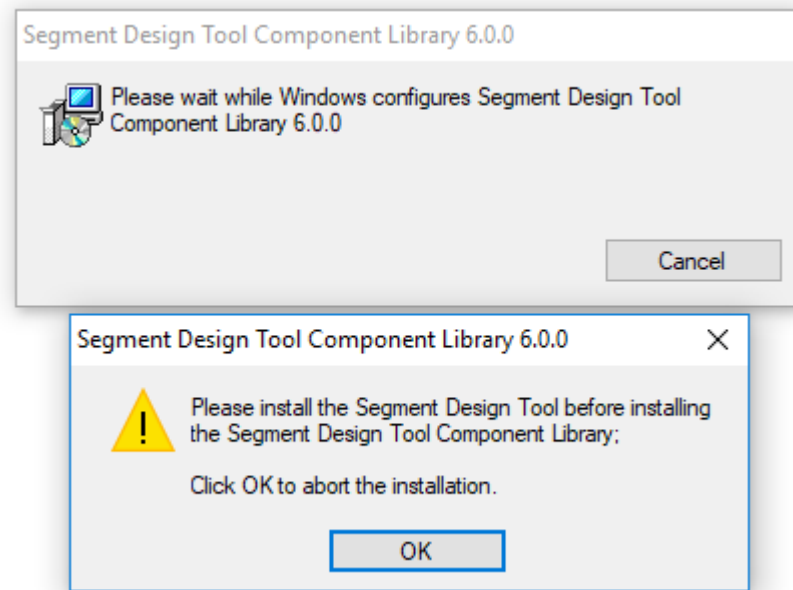


Figure 4 – Warning during installation of SDT Component Library prior to the installation of main SDT Setup.

If there is any older version of the SDT Component Library present on the computer then before installing the new version of the tool first uninstall the older version of the application. To do this, follow the instructions mentioned in the "Uninstalling Procedure" section below in this document.

Important: It is very important to un-install the older version of the SDT Component Library (if present) before installing the new version of the SDT Component Library.

How to check that the earlier version of SDT Component Library is installed on computer(For eg. To check on Windows 10)??

Please refer process below:

- 1) Press keys Windows+R and type "Control Panel"
- 2) Click on Ok
- 3) Click on Programs-Uninstall a program
- 4) Check for the version of SDT Component Library as highlighted in the below screenshot

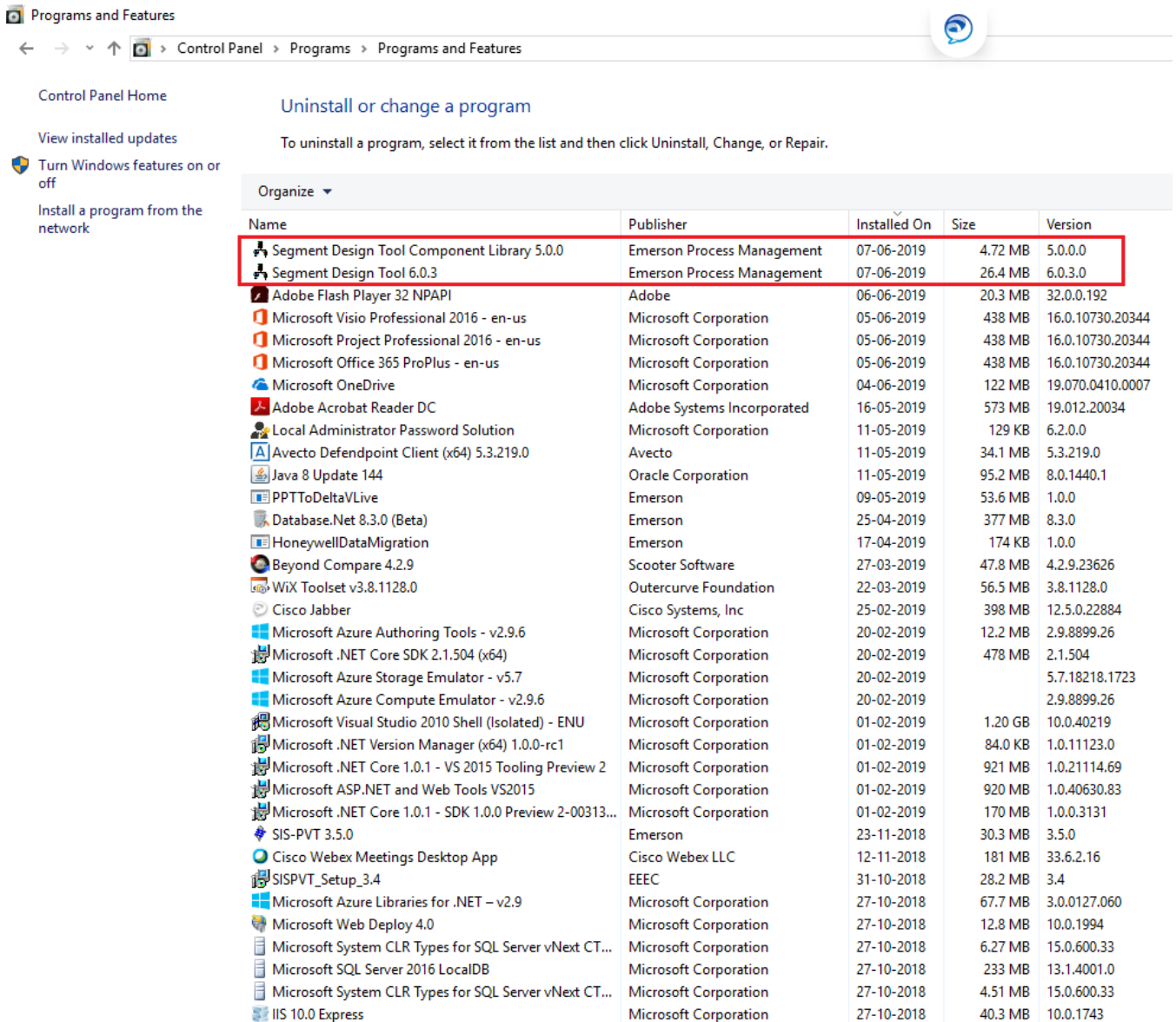


Figure 5 – Installed Segment Design Tool on machine.

In case if the user proceeds with the new version installation of the tool without un-installing the older version of the SDT Component Library then the installation process will prompt the below warning message and will stop the installation process.

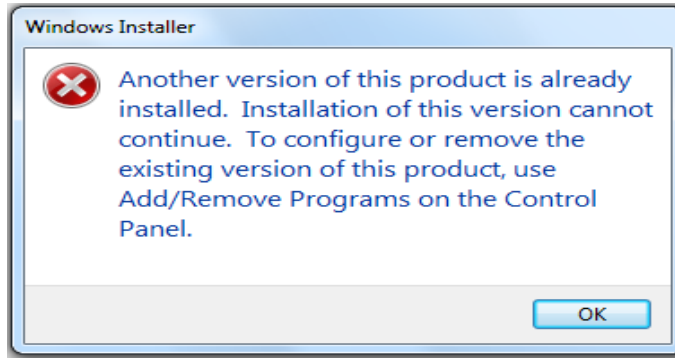


Figure 6 - Remove prior version of SDT Library from computer, if present.

3 INSTALLATION PROCEDURE

3.1 Contents of installation package


To download the installation package, visit the below web site.

<https://gsuds.emerson.com/segment>

Separate installation package link is provided for SDT Main application and SDT Component Library on the right top corner of the web page.

The installation package for SDT Component Library consists the below mentioned setup file.

- Segment Design Tool Component Library 6.0.0 setup file


 SDTComponentLibrary6.0.0

Download the setup (msi) file.

3.2 Installation package execution steps

Installation steps for Segment Design Tool Component Library setup

- Step 1 – Assuming Segment Design Tool main setup is installed, it is mandatory to install Segment Design Tool Component Library as well.
 - To install the same, double click on the “SDTComponentLibrary6.0.0.msi” file and wait till the installation process of Segment Design Tool Component Library completes.

 SDTComponentLibrary6.0.0

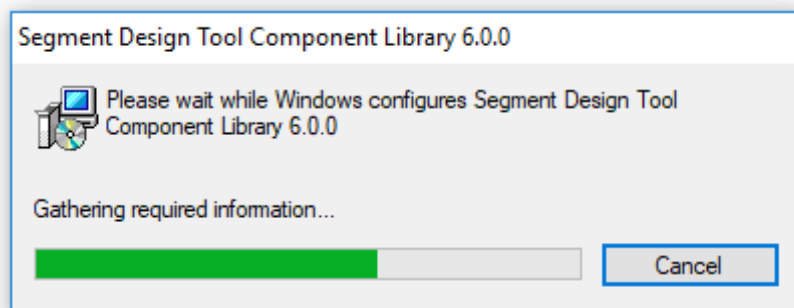






Figure 7 – Installation of SDT Component Library screen.

4 UNINSTALL PROCEDURE

4.1 Instructions / steps

4.1.1.1 The easiest way to uninstall Segment Design Tool is using “Programs and Features” option from the windows control panel.

- Click the Start button 
- For windows 7
 - Select Control Panel -> Programs ->Programs and Features.
- For Windows 10
 - Select Control Panel -> Programs (Uninstall a program)..
- Click Segment Design Tool Component Library  and then click Uninstall.
- Uninstallation of Segment Design Tool  will also remove Segment Design Tool Component Library  from the computer (if exist).

◆