

Installation Manual Template

EEEEC

Segment Design Tool 6.0.7

End Customer: NA
End Customer Reference Number: NA

Document File Name: SDT_6.0.7_Installation_Manual.docx
Document Status: Preliminary / Approved / As-built

Authorizations

	Name	Function	Signature
Developed By:	Chetan Shaha	Sr. System Engineer	CS
Reviewed By:	Bibek Mohanty	Asst. Project Manager	BM
Released By:	Nitin Patankar	Sr. Project Manager	NP

Distribution

Name	Company	Name	Company



Revision History

Rev	Status	Description	Date	Developed By	Reviewed By
1	P1	Preliminary document	02-Jun-2014	Gaurav Jirapure	Nitin Patankar
2	P2	Modified Library Setup version	15-Sep-2014	Gaurav Jirapure	Nitin Patankar
3	P3	Modified Library Setup version	08-Oct-2014	Bibek Mohanty	Nitin Patankar
4	P4	HCD Comments Implemented, 18 devices added to SDT Component Library and issue resolutions	22-Apr-2015	Bibek Mohanty	Nitin Patankar
5	P5	16 new devices added to SDT Component Library	23-Sep-2015	Bibek Mohanty	Nitin Patankar
6	P6	63 new devices and 6 new cards added to SDT Component Library and some issue fixing		Megha Shiral	Nitin Patankar
7	P7	10 new devices added to SDT Component Library and some Modifications related to new hosting site links and Emerson Logo	25-Sep-2019	Megha Shiral	Nitin Patankar
8	P8	11 new devices added to SDT Component Library and some Modifications related to fix issue which was coming while opening large segment	10-Apr-2020	Megha Shiral	Nitin Patankar
9	P9	2 missing devices added to SDT component library, low voltage issue for P&F barrier, and , segment opening issues resolved	05-Aug-2022	Chetan Shaha	Bibek Mohanty
10	P10	39 new devices, 1 Fieldbarrier and 2 Power conditioner added Device certification and segment type compatibility issue fixed LAS backup check/uncheck option retained	19-Feb-2024	Chetan Shaha	Bibek Mohanty
11	P11	Fixed issue related to LAS backup option.	25-Jul-2024	Chetan Shaha	Bibek Mohanty

Emerson Classification: **Internal**

© Emerson Automation Solutions 2024. All rights reserved. Unauthorized duplication, in whole or in part, is prohibited. Trademarks identified in this document are owned by one of the Emerson Process Management group of companies. Unless otherwise agreed to in writing by the parties, any information provided in this document is confidential or proprietary and may not be used or disclosed without the expressed written permission of Emerson Process Management.

Emerson Automation Solutions
Emerson Export Engineering Centre
 Emerson Tower, Matrix Complex,
 Near College of Engineering Pune,
 Shivajinagar, Pune, India - 411 005

Emerson Automation Solutions 2024 - Internal and Proprietary



Contents

1	INTRODUCTION	4
1.1	Purpose	4
1.2	Scope	4
1.3	Terminology	4
2	PRE-REQUISITES	5
2.1	Hardware Pre-requisites	5
2.2	Software Pre-requisites	5
2.3	Installation / Configuration steps for pre-requisites	5
3	INSTALLATION PROCEDURE	7
3.1	Contents of installation package	7
3.2	Installation package execution steps	7
4	UNINSTALL PROCEDURE	11
4.1	Instructions / steps	11

1 INTRODUCTION

1.1 Purpose

The main objective of releasing SDT main application version 6.0.7 is to resolve an issue in the existing application related to LAS backup option. There is NO change in the SDT Component Library.

This document will guide through the installation process of SDT main application setup.

1.2 Scope

This manual contains information concerning the installation, un-installation of the main setup of the Segment Design Tool. To ensure proper installation or uninstallation of the tool, the instructions given in this manual should be thoroughly understood and followed.

1.3 Terminology

SDT – Segment Design Tool
SDT Library or SDT Component Library - Segment Design Tool Component Library

2 PRE-REQUISITES

2.1 Hardware Pre-requisites

Component	Requirement
Computer / processor	1 gigahertz (GHz) or faster processor
Memory (RAM)	16 GB and above
Operating System	Windows 10
System Type	(32-bit & 64-bit Machine)

Table 1 Hardware Pre-requisites

2.2 Software Pre-requisites

Note :- Application requires **administrative privileges** to install SDT Main application & SDT Component Library.

“.Net Framework 4.6.1” shall be installed on computer to run SDT application.

Windows 10 operating system comes pre-installed with “.Net Framework 4.6.1”.

2.3 Installation / Configuration steps for pre-requisites

If there is any older version of the Segment Design Tool is present on the computer then before installing the new version of the tool first uninstall the older version of Segment Design Tool. To do this, follow the instructions mentioned in the "Uninstall Procedure" section below in this document.

Important: It is very important to un-install the older version of the SDT (if present) before installing the new version of the SDT.

How to check that the earlier version of SDT is installed on computer (For eg. To check on Windows 10)?

Please refer process below:

- 1) Press keys Windows+R and type “Control Panel”
- 2) Click on Ok
- 3) Click on Programs and Features - Uninstall a program
- 4) Check for the entry highlighted in the below bitmap.

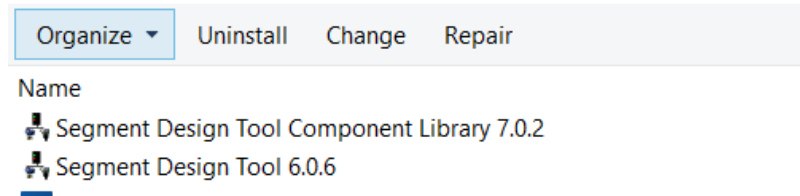


Figure 1 Installed Segment Design Tool on machine

In case, if the user proceeds with the new version installation of the tool without uninstalling the older version of the SDT then the installation process will prompt the below warning message and will stop the installation process.

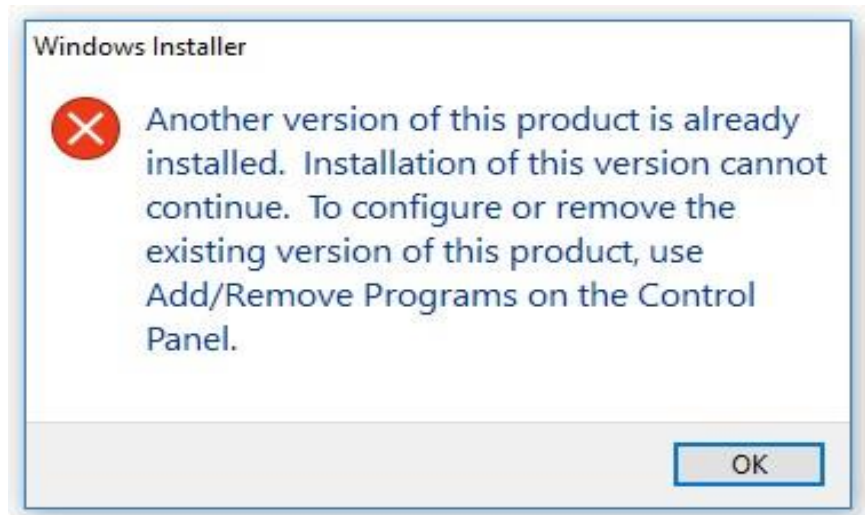


Figure 2 SDT another version installed message

3 INSTALLATION PROCEDURE

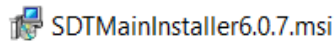
3.1 Contents of installation package

To download the installation package, visit the below web site.

<https://gsuds.emerson.com/segment>

Installation package link is provided on the right top corner of the web page. The installation package for the SDT Main application consists of the below mentioned setup file.

- Main Segment Design Tool 6.0.7 setup



Download or save the setup (msi) file.

3.2 Installation package execution steps

It is mandatory to install the Segment Design Tool Main application setup before the Segment Design Tool Component Library setup.

Below warning message will be pop-up in case if the Segment Design Tool Component Library is getting installed prior to the SDT Main application setup installation.

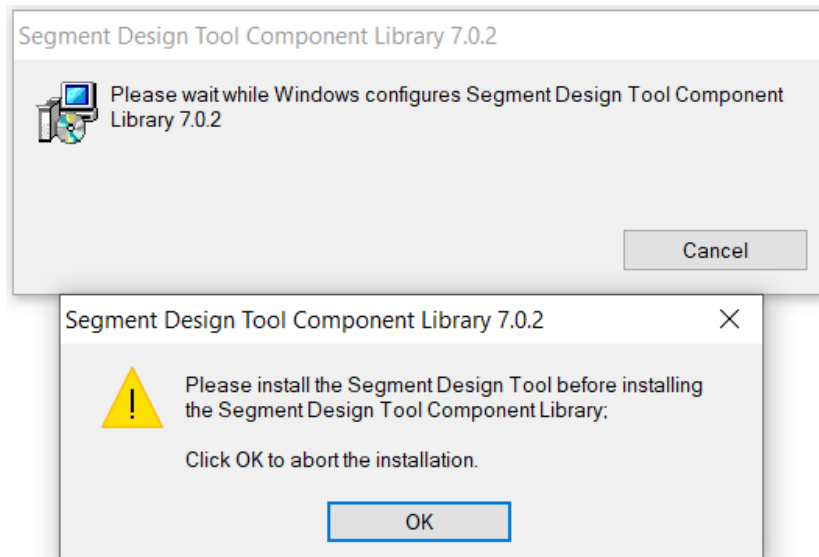
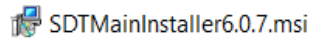


Figure 3 SDT component library installation message

Installation steps for Segment Design Tool main application setup

- Step1 – Double click setup file from Segment Design Tool V6.0.7



- Step2 – Click on Next to Proceed with the installation.



Figure 4 Welcome Screen of SDT

- Step 3 – Read and Accept Software License Agreement and Click Next.

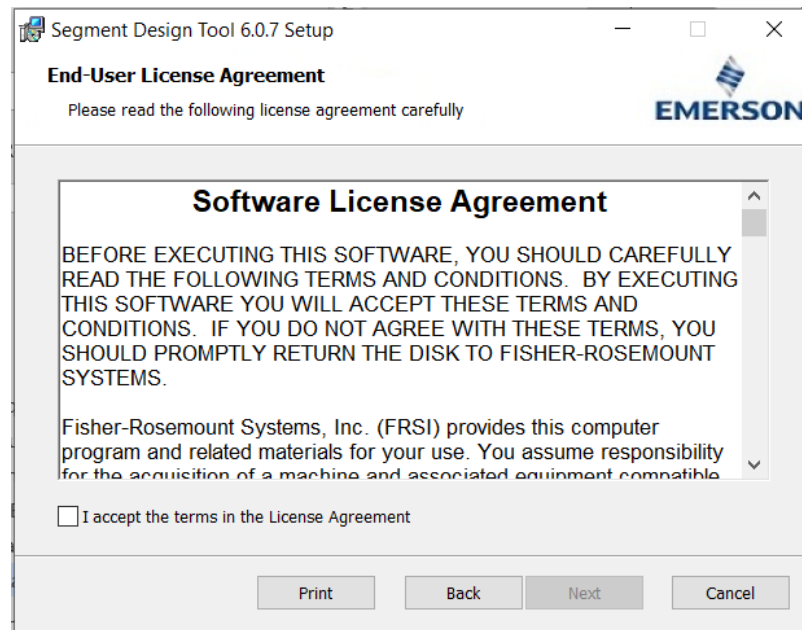


Figure 5 Software License Agreement Screen

- Step 4 – Select Installation Folder and Click Next

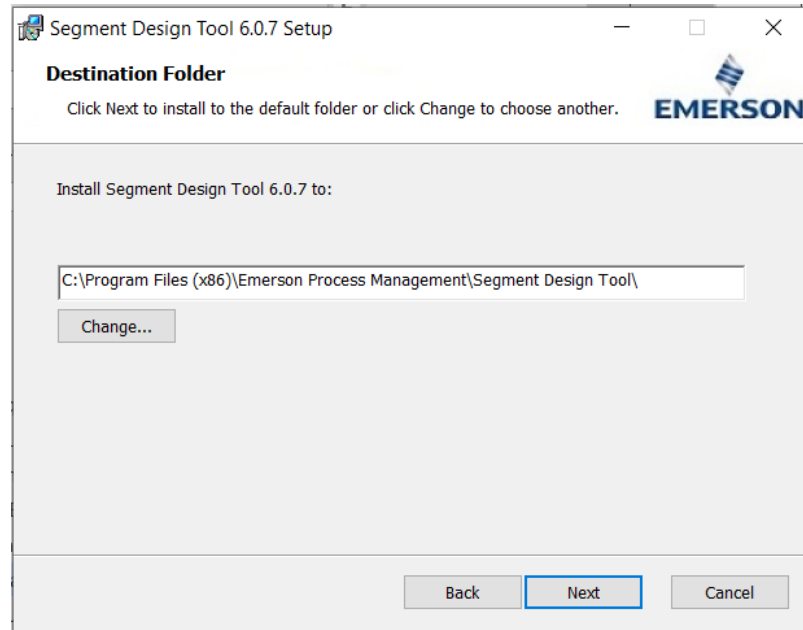


Figure 6 Installation Folder Screen

- Step 5 – Click on Install button to proceed with the installation process.

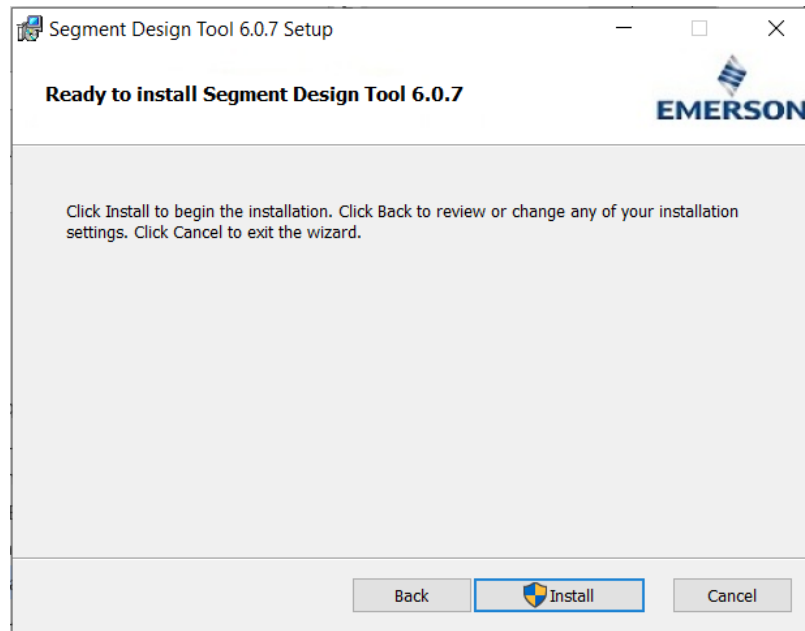


Figure 7 Ready to installation Screen

- Step 6 – Please wait, while installing the Segment Design Tool 6.0.7
- Step 7 – Click Finish to complete the Installation process.

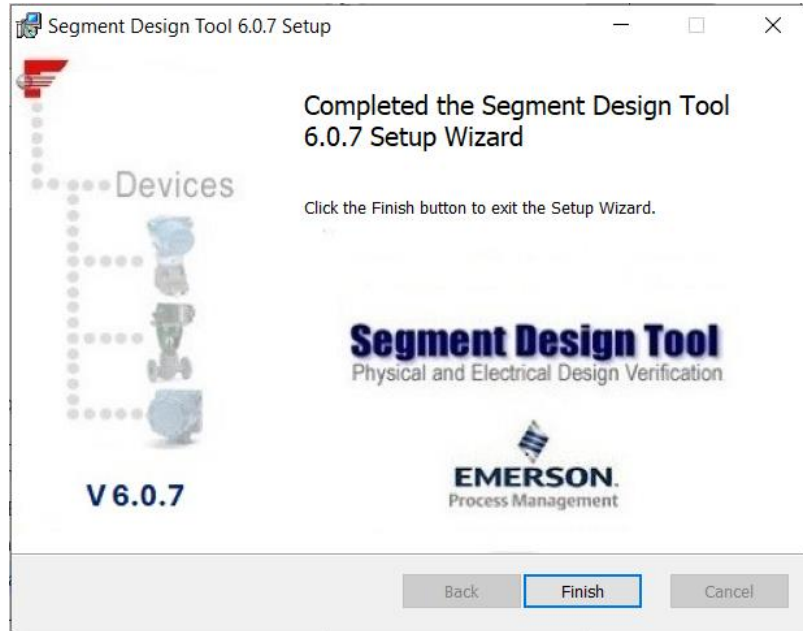


Figure 8 Installation complete screen

- Step 8 – After successful installation of Segment Design Tool main application setup, it is mandatory to install Segment Design Tool Component Library as well.
- To install the same; double click on the “SDTComponentLibrary7.0.2.msi” file and wait till the installation process of Segment Design Tool Component Library completes.

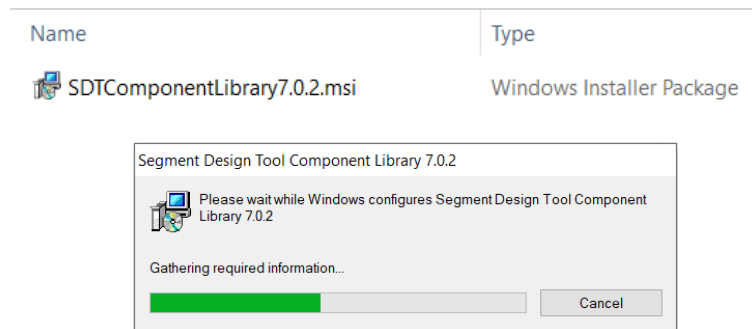


Figure 9 Installation of SDT Component Library screen

- Step 9 - After successful installation of both tool and library setups, short cut icon will be created on windows desktop of logged-in user.

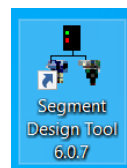


Figure 10 SDT Desktop Shortcut Icon

4 UNINSTALL PROCEDURE

4.1 Instructions / steps

The easiest way to uninstall Segment Design Tool is using “Programs and Features” option from the windows control panel.

1. Select Control Panel -> Programs -> Programs and Features option.
2. Select Segment Design Tool 6.0.7 from the programs list, right click and select “Uninstall” option.

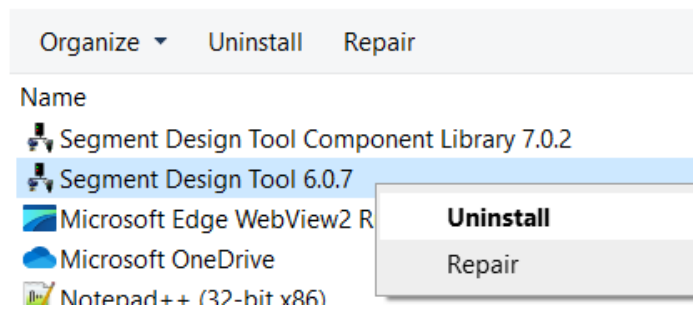


Figure 11 SDT Uninstallation

3. Uninstallation of Segment Design Tool will also remove Segment Design Tool Component Library from the computer (if it exists).

◆