

# Installation Manual

## EEEC

### Segment Design Tool 6.0.4

End Customer:  
End Customer Reference Number:

Document File Name: SDT\_6.0.4\_Installation\_Manual  
Document Status: Approved

#### Authorizations

	Name	Function	Signature
Developed By:	Megha Shiral	MS	
Reviewed By:	Nitin Patankar	NP	
Released By:			

#### Distribution

Name	Company	Name	Company

## Revision History

Rev	Status	Description	Date	Developed By	Reviewed By
1	P1	Preliminary document	02-Jun-2014	Gaurav Jirapure	Nitin Patankar
2	P2	Modified Library Setup version	15-Sep-2014	Gaurav Jirapure	Nitin Patankar
3	P3	Modified Library Setup version	08-Oct-2014	Bibek Mohanty	Nitin Patankar
4	P4	HCD Comments Implemented, 18 devices added to SDT Component Library and issue resolutions	22-Apr-2015	Bibek Mohanty	Nitin Patankar
5	P5	16 new devices added to SDT Component Library	23-Sep-2015	Bibek Mohanty	Nitin Patankar
6	P6	63 new devices and 6 new cards added to SDT Component Library and some issue fixing		Megha Shiral	Nitin Patankar
7	P7	10 new devices added to SDT Component Library and some Modifications related to new hosting site links and Emerson Logo	25-Sep-2019	Megha Shiral	Nitin Patankar

© Emerson Process Management 2019. All rights reserved. Unauthorized duplication, in whole or in part, is prohibited. Trademarks identified in this document are owned by one of the Emerson Process Management group of companies. Unless otherwise agreed to in writing by the parties, any information provided in this document is confidential or proprietary and may not be used or disclosed without the expressed written permission of Emerson Process Management.

**Emerson Export Engineering  
Centre Emerson Process  
Management  
Process Systems and Solutions**  
Emerson Tower, Matrix Complex,  
Near College of Engineering Pune,  
Shivajinagar, Pune, India - 411 005  
T +91 (20) 3026 7000  
F +91 (20) 3026 7998  
**[www.EmersonProcess.com](http://www.EmersonProcess.com)**



## Contents

1	INTRODUCTION .....	4
1.1	Purpose .....	4
1.2	Scope .....	4
1.3	Terminology .....	4
2	PREREQUISITES .....	5
2.1	Hardware prerequisites .....	5
2.2	Software Prerequisites .....	5
2.3	Installation / Configuration steps for prerequisites .....	8
3	INSTALLATION PROCEDURE .....	10
3.1	Contents of installation package .....	10
3.2	Installation package execution steps .....	11
4	UNINSTALL PROCEDURE .....	15
4.1	Instructions / steps .....	15

# 1 INTRODUCTION

## 1.1 Purpose

The main objective of this release SDT main application version 6.0.4 is to resolve an issue in the existing application and make addition of new components to the SDT Component Library. The major change to the SDT Component Library 6.0.0 is that there is an addition of 10 new devices to the library. So, there are changes in both SDT main application as well as SDT Component Library. Hence there are two different setup files available for the complete SDT installation.

This document will guide through the installation process of SDT main application setup.

## 1.2 Scope

This manual contains information concerning the installation, un-installation of the main setup of the Segment Design Tool. To ensure proper installation or uninstallation of the tool, the instructions given in this manual should be thoroughly understood and followed.

## 1.3 Terminology

SDT – Segment Design Tool

SDT Library or SDT Component Library - Segment Design Tool Component Library

## 2 PREREQUISITES

### 2.1 Hardware prerequisites

Component	Requirement
Computer / processor	Intel Pentium 4 (or equivalent ) and above
Memory (RAM)	2 GB RAM and above
Operating System	Windows7 or Windows 2008 server and Windows 10
System Type	(32-bit & 64-bit Machine)

### 2.2 Software Prerequisites

**Note** :- Application requires **administrative privileges** to install SDT Application & SDT Library.

**Important:** In case of Windows 7 or Windows 2008 server (32-bit & 64-bit Machine) operating system it is mandatory to have “.Net Framework version 2.0 or above version” installed on the computer.

*How to check that the “.Net Framework version 2.0 and above” is installed on the Windows 2008 server operating system computer?*

Please refer process below:

- 1) Click on Start
- 2) Click on Control Panel
- 3) Click on Programs and Features



Figure 1 - .Programs and Features.

4) Check for the entry highlighted in the below bitmap.

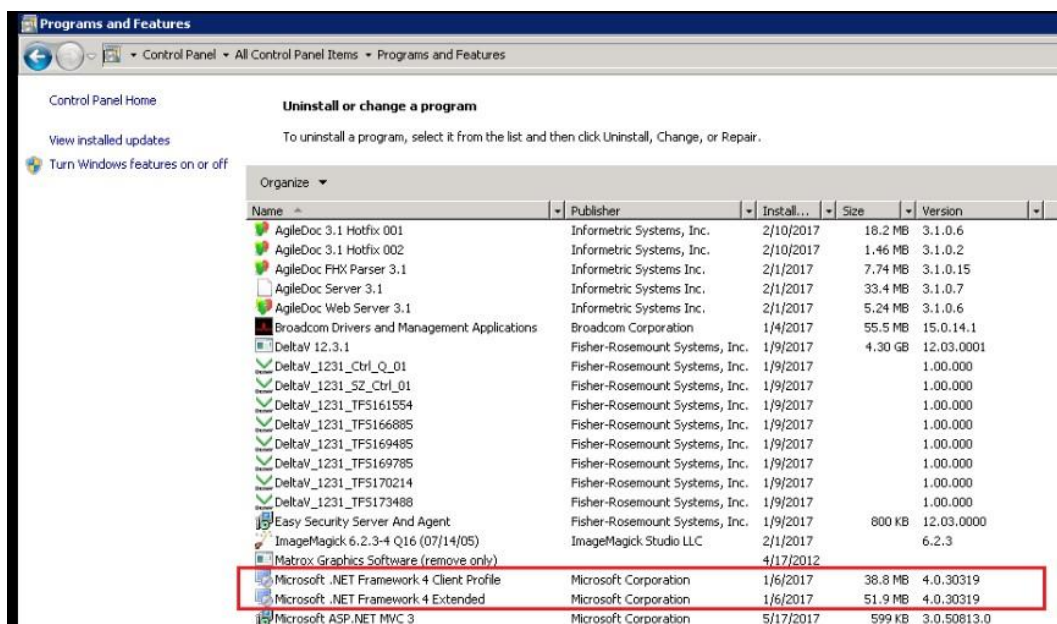


Figure 2 - .NET Framework version 2 and above.

In case if the user proceeds with the SDT 6.0.4 setup installation without “.NET Framework version 2.0” installed on the computer then the installation process will prompt the below message and will stop the installation.

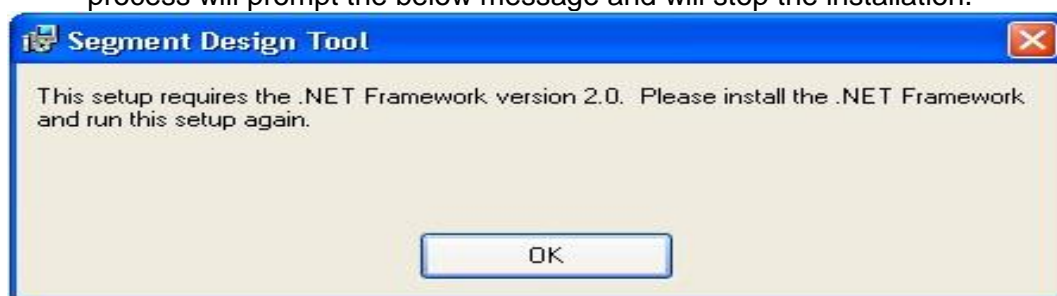


Figure 3 - .NET Framework version 2.0

**Important:** In case of Windows 10 operating system it is mandatory to have “.Net Framework version 3.5 or above” installed on the computer.

In case if the user proceeds with the SDT 6.0.4 setup installation without “.NET Framework version 3.5” installed on the computer then the installation process will prompt the below message and will stop the installation.

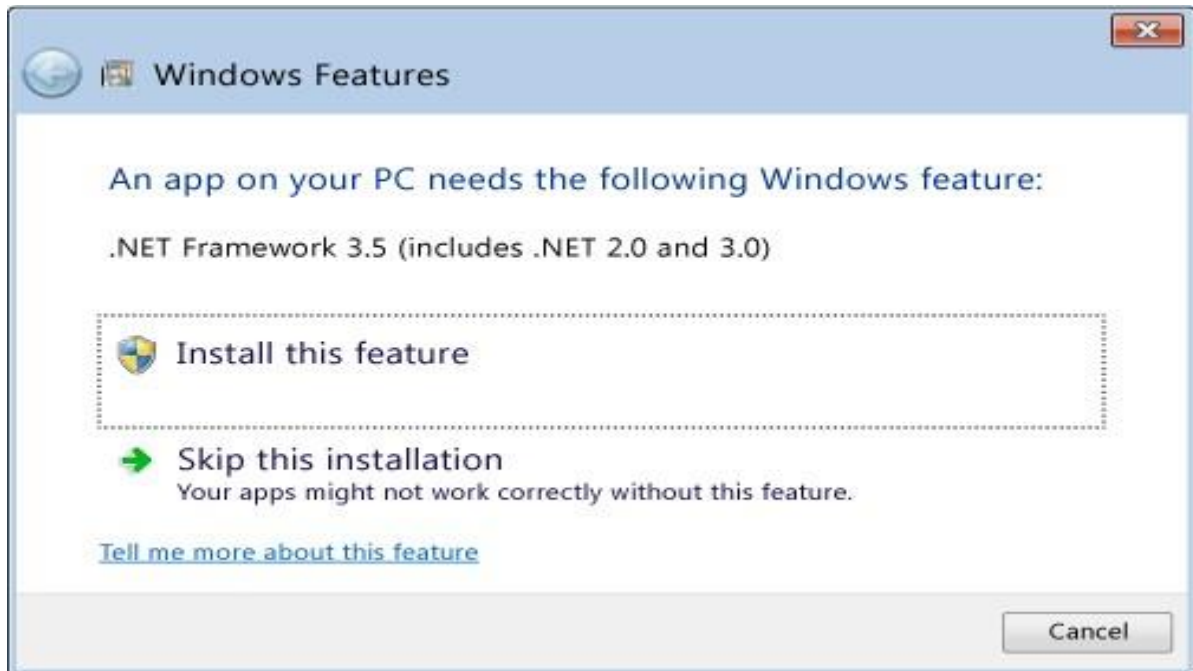


Figure 4 - .NET Framework version 3.5

To install “.NET Framework version 3.5”, follow the below steps:-

- 1) Enter the command in command prompt as: **appwiz.cpl**
- 2) It opens the below window



Figure 5 – Turn Windows features on or off

- 3) Clicked on “Turn Windows features on or off”
- 4) Select the **.NET Framework 3.5 (includes .NET 2.0 and 3.0)** check box, select **OK**, and reboot your computer if prompted.

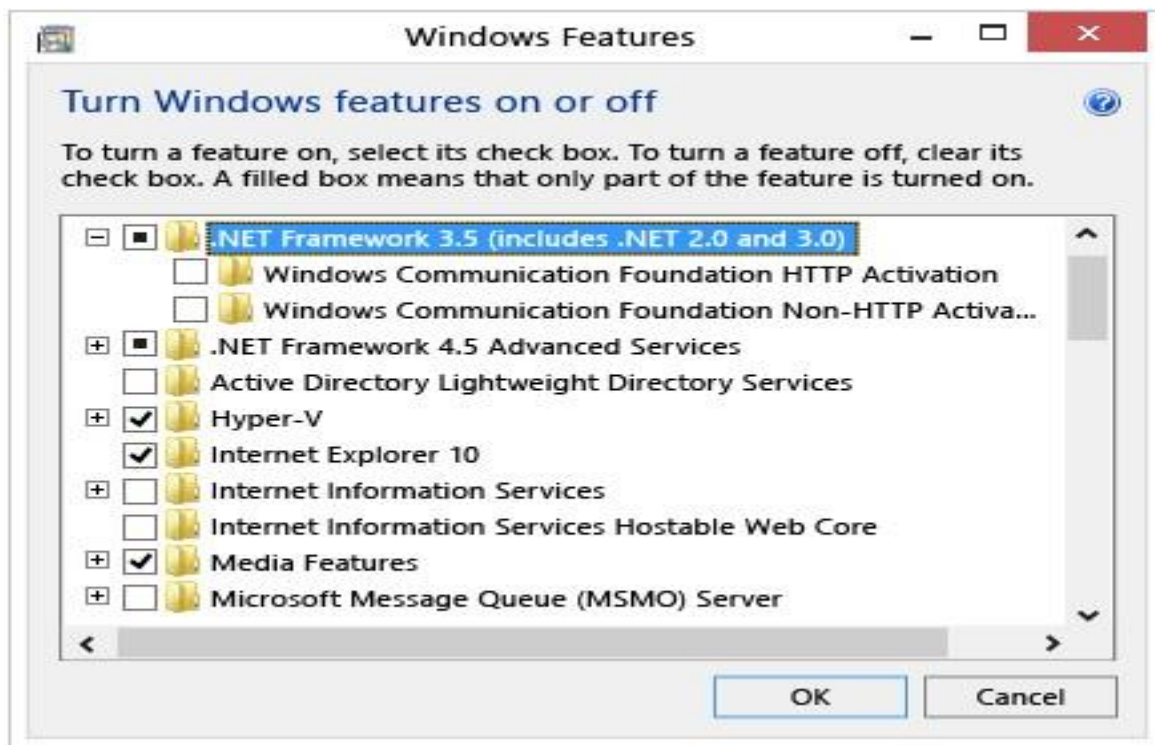


Figure 6 - .Net Framework 3.5

## 2.3 Installation / Configuration steps for prerequisites

If there is any older version of the Segment Design Tool is present on the computer then before installing the new version of the tool first uninstall the older version of Segment Design Tool. To do this, follow the instructions mentioned in the "Uninstalling Procedure" section below in this document.

**Important:** It is very important to un-install the older version of the SDT (if present) before installing the new version of the SDT.

*How to check that the earlier version of SDT is installed on computer(For eg. To check on Windows 10)?*

Please refer process below:

- 1) Press keys Windows+R and type "Control Panel"
- 2) Click on Ok
- 3) Click on Programs-Uninstall a program
- 4) Check for the entry highlighted in the below bitmap.

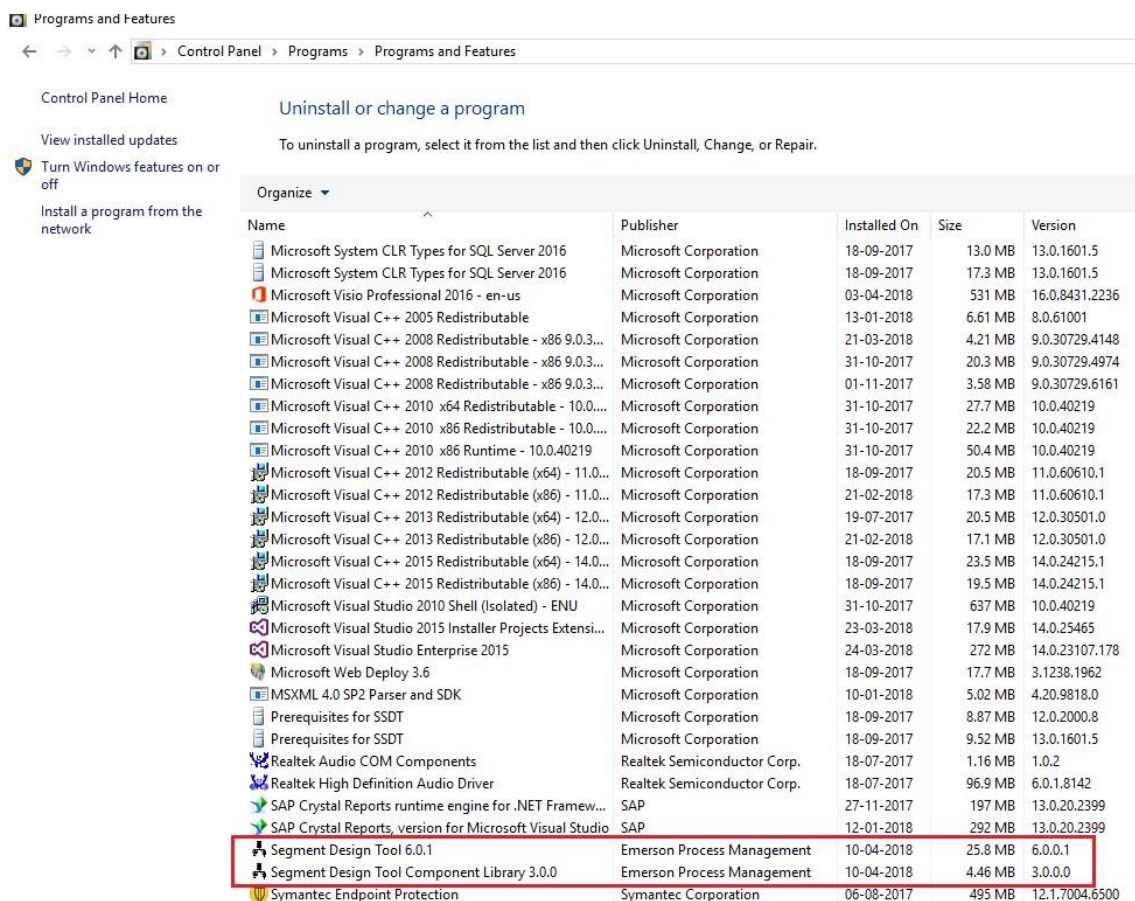


Figure 7 – Installed Segment Design Tool on machine.

In case if the user proceeds with the new version installation of the tool without uninstalling the older version of the SDT then the installation process will prompt the below warning message and will stop the installation process.

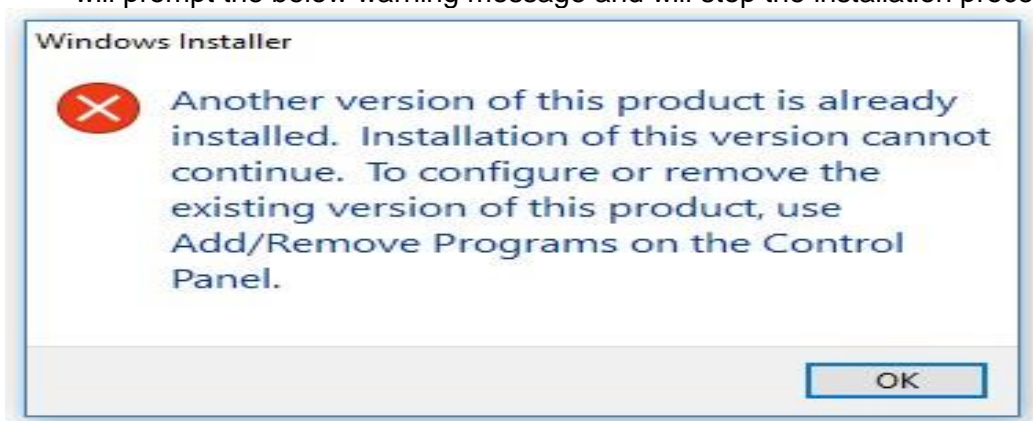


Figure 8 - Remove prior version of SDT from computer, if present.

## **3 INSTALLATION PROCEDURE**

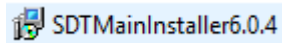
### **3.1 Contents of installation package**

To download the installation package, visit the below web site.

<https://gsuds.emerson.com/segment>

Installation package link is provided on the right top corner of the web page.  
The installation package for the SDT Main application consists of the below mentioned setup file.

- Main Segment Design Tool 6.0.4 setup



Download or save the setup (msi) file .

## 3.2 Installation package execution steps

It is mandatory to install the Main Segment Design Tool setup before the segment design tool component library setup.

Below warning message will be pop-up in case if the Segment Design Tool Component Library is getting installed prior to the SDT main setup installation.

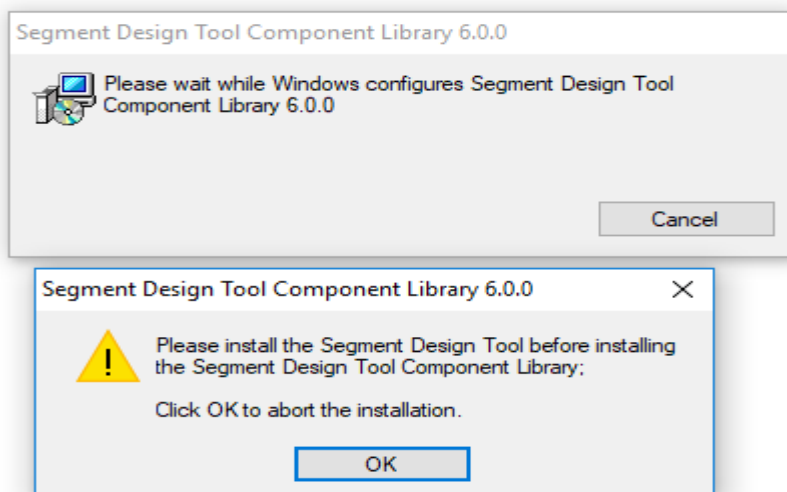
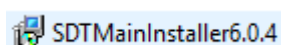


Figure 9 – Warning during installation of SDT Component Library prior to the installation of main SDT Setup.

### Installation steps for Main segment Design Tool setup

- Step1 – Double Click setup file from Segment Design Tool V6.0.4



- Step2 – Click on Next to Proceed with the installation.



Figure 10 – Welcome Screen of SDT

- Step 3 – Read and Accept Software License Agreement and Click Next.

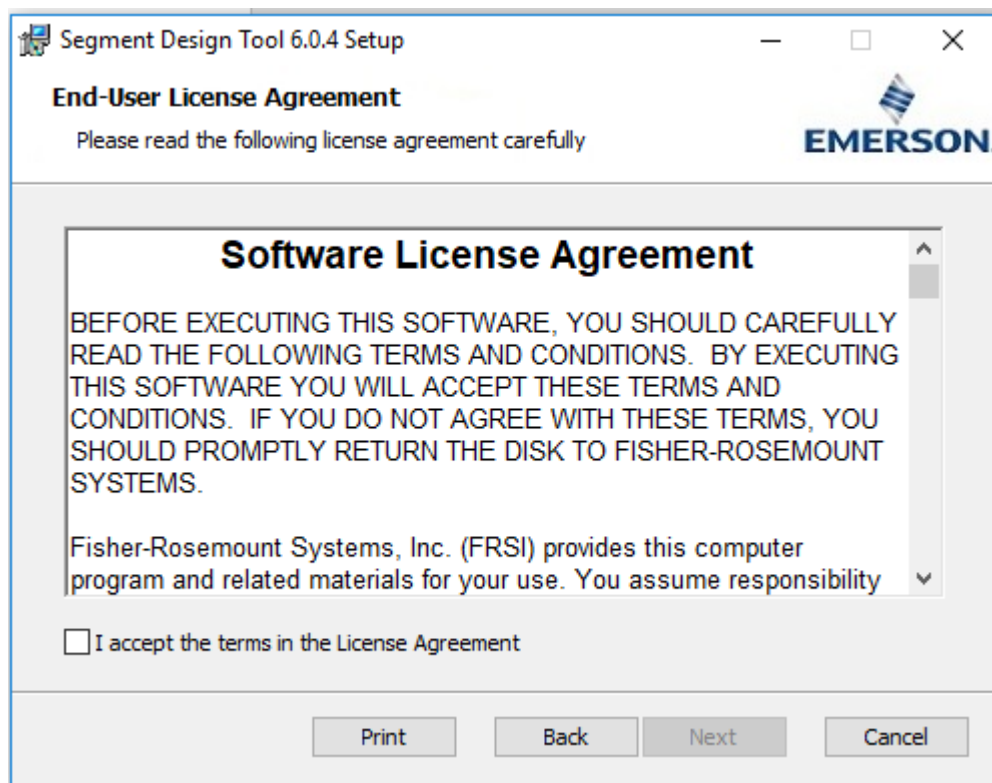


Figure 11 – Software License Agreement Screen.

- Step 4 – Select Installation Folder and Click Next

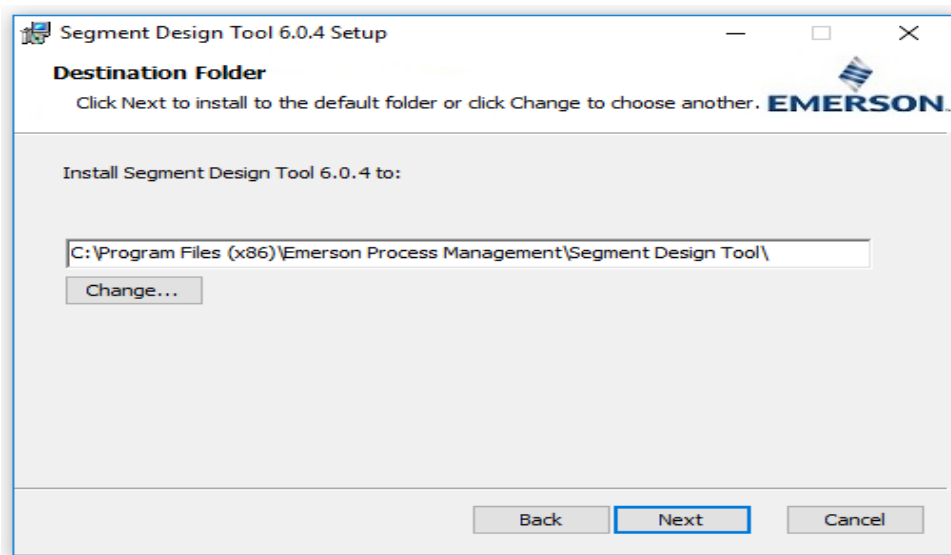


Figure 12 – Installation Folder Screen.

- Step 5 – Click on Install button to proceed with the installation process.

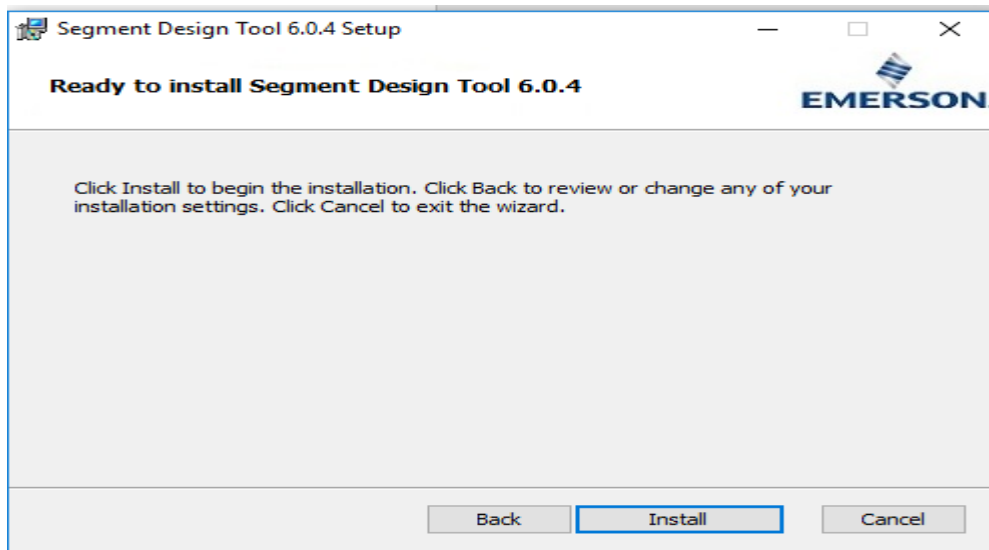


Figure 13 – Ready to installation Screen.

- Step 6 – Please wait, while installing the Segment Design Tool 6.0.4
- Step 7 – Click Finish to complete the Installation process.

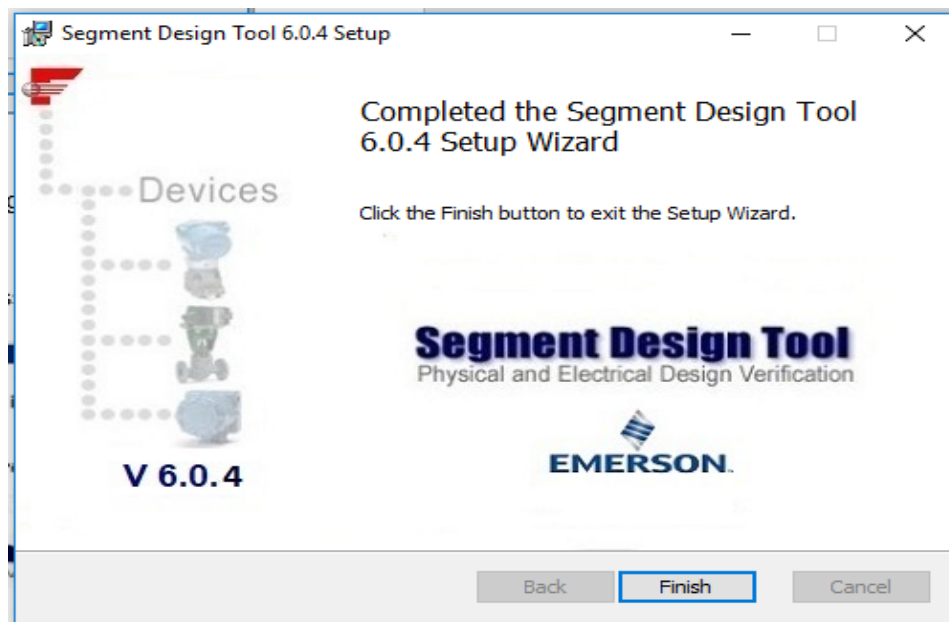



Figure 14 – Click on Finish to complete Installation.

- Step 8 – After successful installation of Segment Design Tool main setup, it is mandatory to install Segment Design Tool Component Library as well.

- To install the same; double Click on the “SDTComponentLibrary6.0.0.msi” file and wait till the installation process of Segment Design Tool Component Library completes.

 SDTComponentLibrary6.0.0

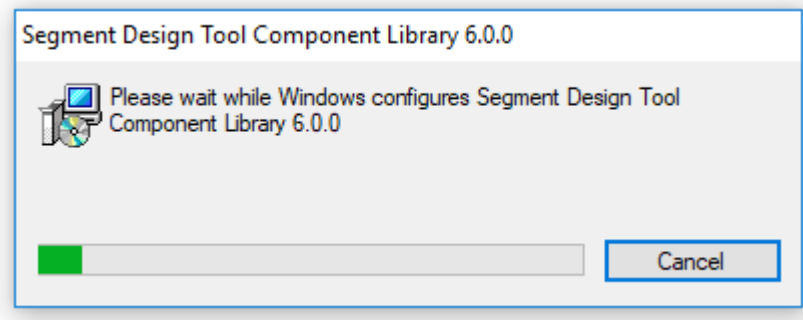






Figure 15 – Installation of SDT Component Library screen.

## 4 UNINSTALL PROCEDURE

### 4.1 Instructions / steps

- 4.1.1.1 The easiest way to uninstall Segment Design Tool is using “Programs and Features” option from the windows control panel.
- Click the Start button 
  - For windows 7 ○ Select Control Panel -> Programs -> Programs and Features.
  - For Windows 10 ○ Select Control Panel -> Programs (Uninstall a program).
  - Click Segment Design Tool  and then click Uninstall.
  - Uninstallation of Segment Design Tool  will also remove Segment Design Tool Component Library  from the computer (if exist).

◆